

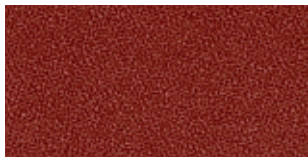
**GAJA C2C™**

---

by Gabriel



Please be aware that the PDF colour shades can appear different from the real fabric colours.



63065



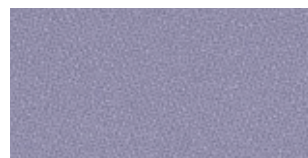
63066



66099



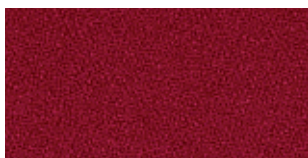
64155



65074



66105



64152



65073



66006



64154



65075

Please be aware that the PDF colour shades can appear different from the real fabric colours.





66105



68090



67041



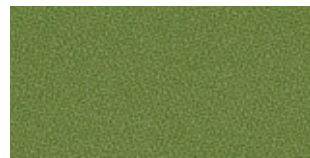
68091



62039



67042



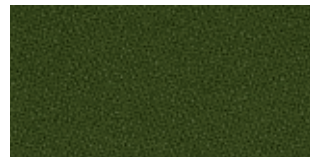
68094



62040



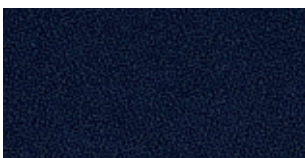
67040



68093



62041



66061



68092

Please be aware that the PDF colour shades can appear different from the real fabric colours.

# GAJA C2C™

Design no.		2417
Fields of application		contract quality
Material	wools of New Zealand	100 %
Weight		530 gr/lm · (17.09 oz/lin.yd.)
Width		140 cm · (55")
Abrasion resistance	rubs · EN ISO 12947-2 (Martindale)	50,000
Pilling	scale 1-5, max 5 · EN ISO 12945-2	4-5
Colour fastness to light	scale 1-8, max 8 · EN ISO 105 - B02	5-7
Colour fastness to rubbing	scale 1-5, max 5 · EN ISO 105x12 (wet/dry)	4-5
Cleaning	dry cleaning	P(S)
Flammability	EN 1021 1&2 · BS 7176 · BS 5852 0&1 · BS 5852 Crib 5 · UNI 9175 Class 1 I Emme · AM 18-NF D 60-013 · BS 476 Part 7, class 1 · IMO MSC 307(88) Annex 1 part 8 · MED Certificate IMO · California Bullentin CAL 117-E Class 1 Will also pass other flammability standards. Flame retardant performance is dependent upon the foam used.	
US ACT	<ul style="list-style-type: none"> <li>☀ AATCC 16 Light fastness</li> <li>☪ AATCC 8 or 116 wet/dry crocking</li> <li>🔥 California Bulletin CAL 117-E Class 1</li> <li>📐 ASTM D4966-02 Martindale Abrasion</li> <li>★ ASTM D3511 Pilling</li> </ul>	pass pass pass pass pass
Design/Colours	Dorte Bo Bojesen / Dorthe Helm	
Subject to changes and colour differences		

